

BH800 泥浆泵技术参数 Mud Pumps Technical Parameters



冲次 Stroke/minute	额定功率 Rated power		缸套直径 Cylinder Liner's Diameter,mm							
			170	160	150	140	130	120	110	
			额定压力 Rated Pressure Mpa (psi)							
	12.4(1771)	14.4(2057)	16.9(2414)	20.1(2871)	24.3(3471)	30 (4286)	35(5000)			
	kW	HP	排量 DisplacementL/S(GPM)							
175	648	880	46.90	40.43	34.48	29.05	23.98	19.43	15.49	
160	592	805	42.88	36.96	31.52	26.56	21.92	17.76	14.16	
150	595	755	40.20	34.65	29.55	24.90	20.55	16.65	13.28	
140	518	705	37.52	32.34	27.58	23.24	19.18	15.54	12.39	
130	481	654	38.84	30.03	25.61	21.58	17.81	14.43	11.44	
120	444	604	32.16	27.72	23.64	19.92	16.44	13.32	10.56	
110	407	554	29.48	25.42	21.67	18.26	15.07	12.21	9.68	

Note: Basis of the 90% mechanic efficiency and 100% capacity efficiency.

注：依据 90%的机械效率和 100%的容积效率。

应用案例 Application Cases

该系列已经广泛用于油田井口输送泥浆，批量出口至俄罗斯和叙利亚。

The series has widely used for conveying mud at the wells on the oil fields.They have been exported in bulk and used in ROSENEFT oil field,Russia and Syria.

HTB600 泥浆泵技术参数 Mud Pumps Technical Parameters



冲次 Stroke/minute	额定功率 Rated power		缸套直径 Cylinder Liner's Diameter,mm											
			114.3		101.6		88.9		76.2		69.9		63.5	
	kW	HP	排量 Displacement, lpm 和额定压力 and Rated Pressure,psi											
			lpm	psi	lpm	psi	lpm	psi	lpm	psi	lpm	psi	lpm	psi
450	448	600	2111	1660	1668	2100	1277	2744	938	3734	788	4444	651	5377
300	448	600	1407	2489	1112	3151	851	4115	625	5601	526	6666	434	8066
200	448	600	938	3734	741	4726	568	6173	417	8402	350	9999	290	12099
120	448	600	563	6224	445	7877	341	10288	250	14003	210	16665	174	20165
50	188	253	235	6288	185	7958	142	10394	104	14147	87	16836	72	20372

Note: Basis of the 90% mechanic efficiency and 100% capacity efficiency.

注：依据 90%的机械效率和 100%的容积效率。

应用案例 Application Cases

该系列已经广泛用于油田井口输送泥浆，批量应用于渤海油田。

The series has widely used for conveying mud at the wells on the oil fields.They have been used in bulk on BOHAI Oil field,China.

HTB500 泥浆泵技术参数 Mud Pumps Technical Parameters



冲次 Stroke/minute	额定功率 Rated power		缸套直径 Cylinder Liner's Diameter,mm							
			170	160	150	140	130	120	110	100
			额定压力 Rated Pressure Mpa (psi)							
	9.4(1363)	10.6(1537)	12.1(1755)	13.9(2016)	16.1(2335)	18.9(2741)	22.5(3263)	27.2(3944)		
	kW	HP	排量 DisplacementL/S(GPM)							
165	373	500	35.67	31.60	27.77	24.19	20.86	17.77	14.94	12.34
150	339	455	32.43	28.73	25.25	21.99	18.96	16.16	13.58	11.22
140	316	424	30.27	26.81	23.56	20.53	17.70	15.08	12.67	10.47
130	294	394	28.11	24.90	21.88	19.06	16.44	14.00	11.77	9.73
120	271	364	25.94	22.98	20.20	17.60	15.17	12.93	10.86	8.98
110	249	333	23.78	21.07	18.52	16.13	13.91	11.85	9.96	8.23

Note: Basis of the 90% mechanic efficiency and 100% capacity efficiency.

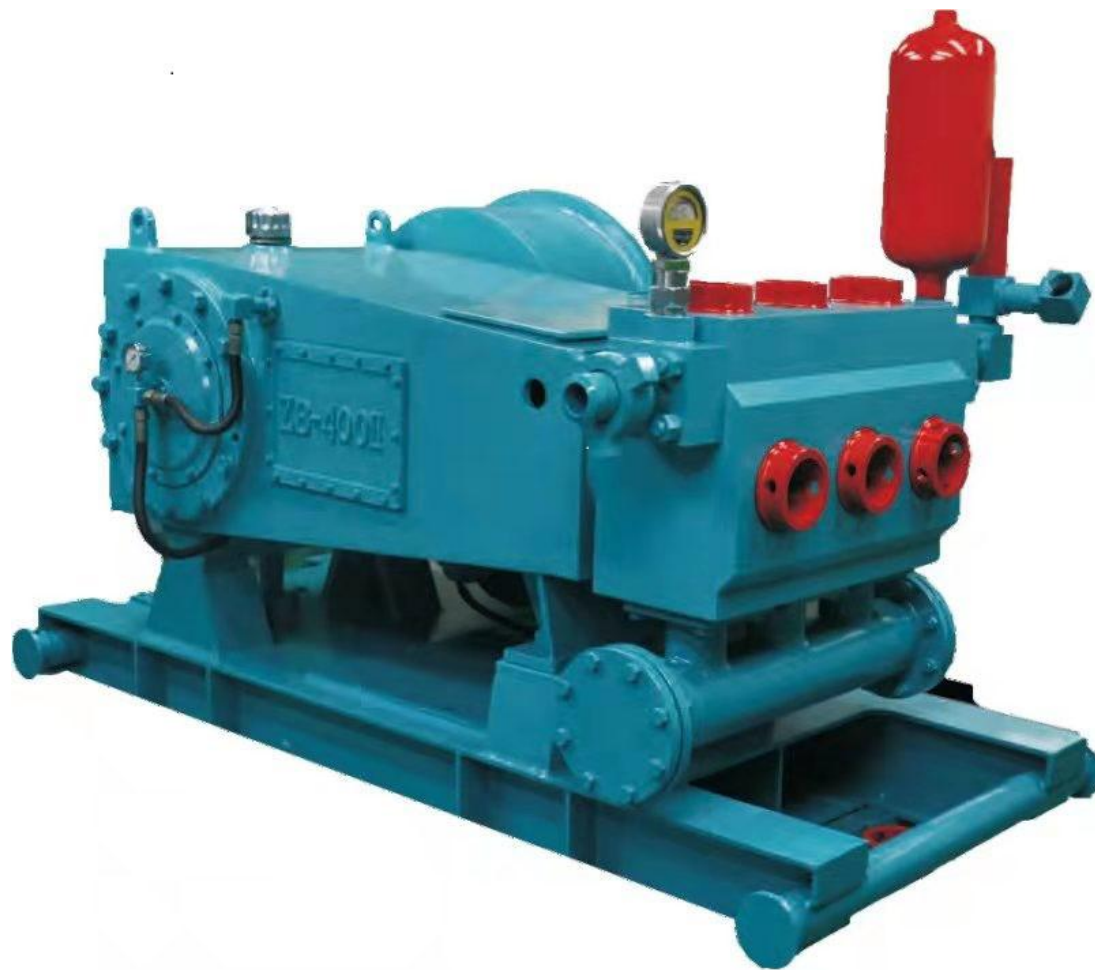
注：依据 90%的机械效率和 100%的容积效率。

应用案例 Application Cases

该系列已经广泛用于油田井口输送泥浆，批量应用于渤海油田。

The series has widely used for conveying mud at the wells on the oil fields.They have been used in bulk in Bohai Oil Field,China.

HTB400 泥浆泵技术参数 Mud Pumps Technical Parameters





柱塞	每转Per stroke	泵冲次/输入轴转速Strokes/Input speed 对应的排量和压力 Displacement and pressure
----	--------------	--

ООО «ТИ-СИСТЕМС» ИНЖИНИРИНГ И ПОСТАВКА ТЕХНОЛОГИЧЕСКОГО ОБОРУДОВАНИЯ
 Интернет: www.tisys.ru www.tisys.kz www.tisys.by www.tesec.ru www.ти-системс.рф
 Телефоны: +7 (495) 7774788, 7489626, (925) 5007155, 54, 65
 Эл. почта: info@tisys.ru info@tisys.kz info@tisys.by

直径 Plunger Dis	排量 Displacement	50/229rpm		100/457		200/914		300/1371		450/2057	
		gpm (lpm)	PSi (MPa)	gpm (lpm)	PSi (MPa)	gpm (lpm)	PSi (MPa)	gpm (lpm)	PSi (MPa)	gpm (lpm)	PSi (MPa)
3.5" (88.9)	0.75 (2.8)	38 (142)	10000 (70)	75 (284)	8242 (57.7)	150 (568)	4114 (28.8)	225 (851)	2742 (19.2)	338 (1277)	1828 (12.8)
4" (101.6)	0.98 (3.7)	49 (185)	8000 (56)	98 (371)	6370 (44.2)	196 (741)	3150 (22)	294 (1112)	2100 (14.8)	441 (1667)	1560 (9.8)
4.5" (114.3)	1.24 (4.7)	62 (235)	6000 (42)	124 (469)	5030 (35)	248 (938)	2485 (17.5)	372 (1407)	1660 (11.7)	557 (2110)	1220 (7.8)

Note: Basis of the 90% mechanic efficiency and 100% capacity efficiency.

注：依据 90%的机械效率和 100%的容积效率。

应用案例 Application Cases

该系列已经广泛用于油田井口输送泥浆，批量应用于阿曼、伊朗、委内瑞拉和哥伦比亚的油田。

The series has widely used for conveying mud at the wells on the oil fields. They have been exported and used in bulk on the oil fields of Oman, Iran, Venezuela and Columbia.

HTB250 泥浆泵技术参数 Mud Pumps Technical Parameters



冲次 Stroke min ⁻¹	泵速 Pump speed min ⁻¹	柱塞直径 Plunger Dia.mm								
		90			100			115		
		排量 Displacement L/min	压力 Pressure MPa	Input power kW	排量 Displacement L/min	压力 Pressure MPa	Input power kW	排量 Displacement L/min	压力 Pressure MPa	Input power kW
50	230	145	42	100	179	42	117	237	35	136
75	345	218	41	146	269	37.5	165	356	28.3	165
100	460	290	34.8	165	359	28.1	165	474	21.3	165
150	690	436	23.1	165	538	18.7	165	712	14.1	165
200	920	581	17.3	165	718	14.0	165	949	10.6	165
250	1150	727	13.8	165	897	11.2	165	1187	8.5	165
282	1300	820	12.3	165	1012	10.0	165	1338	7.5	165

Note: Basis of the 90% mechanic efficiency and 100% capacity efficiency.

注：依据 90%的机械效率和 100%的容积效率。

应用案例 Application Cases

该系列已经广泛用于油田井口输送泥浆，批量应用于尼日利亚用于测高压(10000psi)的油田。

The series has widely used for conveying mud at the wells on the oil fields.They have been exported and used in bulk on the oil fields of Nigeria for testing high pressure 10000psi.

HTB200 泥浆泵技术参数 Mud Pumps Technical Parameters



冲次 Stroke min ⁻¹	泵速 Pump speed min ⁻¹	柱塞直径 Plunger Dia.mm								
		90			100			110		
		排量 Displacement L/min	压力 Pressure MPa	Input power kW	排量 Displacement L/min	压力 Pressure MPa	Input power kW	排量 Displacement L/min	压力 Pressure MPa	Input power kW
50	230	128	42	88	159	35	91	192	20	63
75	345	193	41	129	238	33.4	130	288	20	94
100	460	257	31	130	318	25.0	130	384	20	125
150	690	386	20.6	130	477	16.7	130	577	13.7	130
200	920	515	15.4	130	636	12.5	130	769	10.3	130
250	1150	643	12.3	130	795	10.0	130	962	8.2	130
282	1300	726	10.9	130	896	8.8	130	1085	7.3	130

Note: Basis of the 90% mechanic efficiency and 100% capacity efficiency.

注：依据 90%的机械效率和 100%的容积效率。

应用案例 Application Cases

该系列已经广泛用于油田井口输送泥浆，批量应用于尼日利亚、委内瑞拉和哥伦比亚的油田。

The series has widely used for conveying mud at the wells on the oil fields. They have been exported and used in bulk on the oil fields of Nigeria, Venezuela and Columbia.

NB1500 压裂泵技术参数 Fracture Pump Technical Parameters



Application

Intermittent work in the oil and gas wells, such fracturing, cementing and completion.

Specification

MAX. Power: 1119kW (1500HP)

Stroke: 203.2mm (8")

MAX. Pressure: 110MPa (15950psi)

MAX. Flow: 150m³/h (2500L/min)

Recent Application cases

Huadong Oil Field of SINOPEC,China

NB600 压裂泵技术参数 Fracture Pump Technical Parameters(OEM for Bomco)



Application

Driven by hydraulic motor; Mate with the trenchless large-tonnage horizontal directional drilling machines to pump various viscous and non-viscous hydraulic fluids such as fresh water and mud.

Specification

Rated Power:445kW (600 HP)

Rated Pressure:40 MPa

Max stroke rate:324 rpm

Max.Displacement:87.5 m³/h (Diesel engine's speed:2100 r.p.m)

Plunger Diameter: Φ115 mm

Stroke: 152.4 mm

Gear Ratio: 4.6: 1

Suction Dia.: 4"

Discharge Dia.: 2"

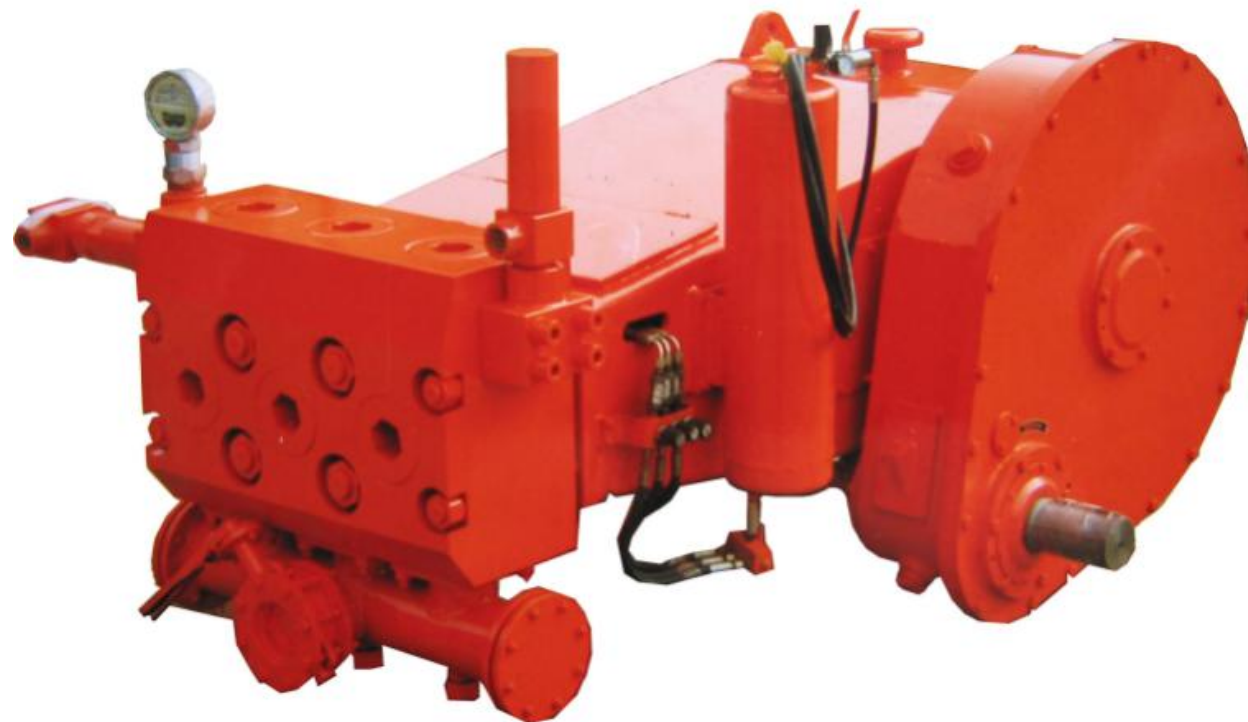
Recent Application cases

NB600 Drilling operation of XGMG's horizontal directional drilling rigs

Complete Mud Pump Unit for Export Projects 用于出口项目的整套泵组



Vehicle Pump 车载泵



Control Cabinet 控制系统



Movable Pump Cabinet 移动式泵房

